



HIGH PERFORMANCE LUXURY VINYL TILE AND PLANK

# ECOLAY+ plank Wood

Dimension: 180 x 1.201 mm | Total thickness: 5,0 mm



ECOLAY PLANK / NLP - 4501



ECOLAY PLANK / NLP - 6601



ECOLAY PLANK / NLP - 5510



ECOLAY PLANK / NLP - 6602



ECOLAY PLANK / NLP - 6902



Restaurant Ecolay+ Plank NLP-5510

## Wood

Long planks of wood with rich and versatile look.

Loose Lay



LONG PLANK

Heavy Commercial Grade

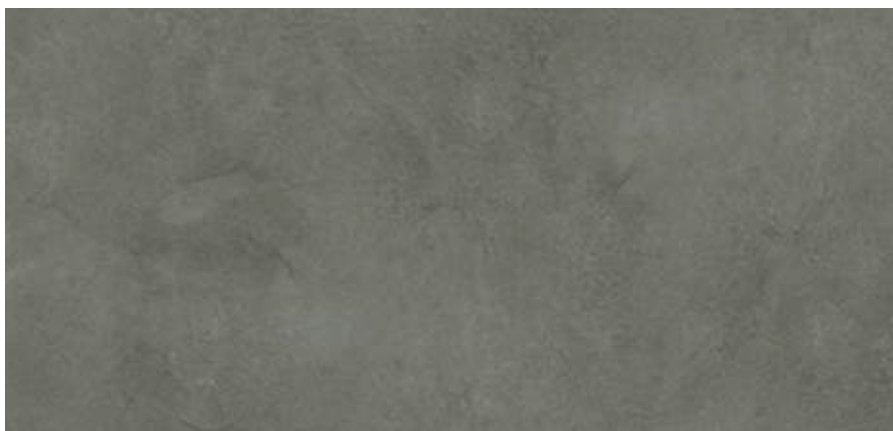


# Grande **ECOLAY+** tile

Dimension: 914,4 x 914,4 mm | Total thickness: 5,0 mm



GRANDE TILE / NLI - 1010



GRANDE TILE / NLI - 1011



GRANDE TILE / NLI - 2302



GRANDE TILE / NLI - 2301

# **ECOLAY+** tile Stone-Concrete

Dimension: 600 x 600 mm | Total thickness: 5,0 mm



TILE / NLI - 2130



Business building cafe Grande Ecolay+ Tile NLI-1011

## Stone-Concrete

Unique size options of concrete and stone tile bringing a sense of elegance.

Loose Lay



TILE

Heavy Commercial Grade



# ORCHID<sup>+</sup> plank Warm Wood

Dimension: 186 x 940 mm | Total thickness: 2,5 mm



NATURAL OAK / NOP - 4702

# ORCHID<sup>+</sup> rectangle Stone-Concrete

Dimension: 304.8 x 609.6 mm | Total thickness: 2,5 mm



ORCHID STONE / NOI - 1931



All commercial floors Orchid<sup>+</sup> Plank NOP-4702

## Warm Wood

Short planks of wood with rich and versatile look.

Full glue down



SHORT PLANK

Heavy Commercial Grade



Art Gallery & Museum Orchid<sup>+</sup> Rectangle NOI-1931

## Stone-Concrete

Rectangular size of stone with rich and versatile look.

Full glue down



RECTANGLE

Heavy Commercial Grade

## Specifications

### With EPT™ shield & EMT™ core technologies

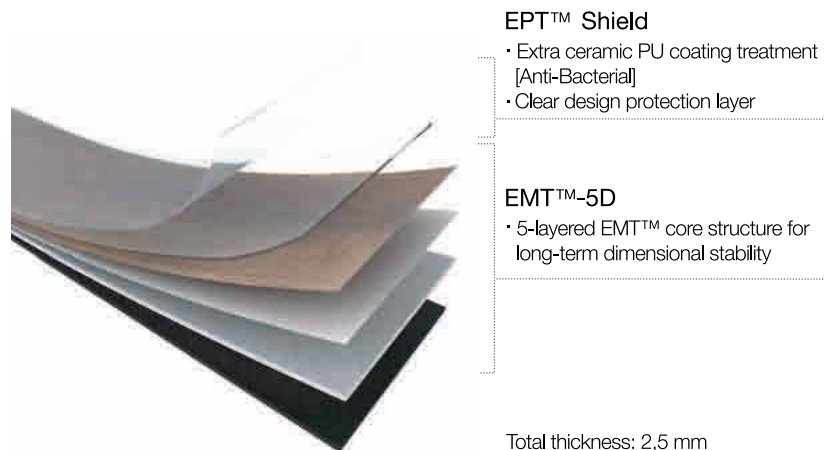
EPT™ shield & EMT™ core technologies are the foundation of **ORCHID+** innovation, providing the most stable and eco-friendly products.

### Proven innovation of ORCHID+ since 2003

Distinguished EMT™ core technology Multi-Layer Property ensures the unparalleled dimensional stability and extra sound absorption of **ORCHID+**

### ORCHID+ Non-skid backing

**ORCHID+** can be supplied with non-skid backing type according to your request.



### Installation Guidelines

- Prior to installation, the subfloor must be heated for -14 days if heating is available, and if not, allow sufficient time to dry out completely.
- Room temperature must be maintained at 18°C or higher before and during installation.
- The flooring must be allowed to acclimate in the room to be installed for a minimum of 24 hours and be stacked flat on the floor to avoid bending the floor.
- Prior to installation, please ensure that both color and lot# are the same.
- When installing **ORCHID+**, be sure to keep dust, dirt or foreign particles away from the locking strip.

### Maintenance

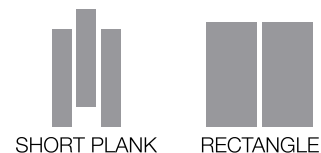
- Regularly sweep floor to remove sand and grit that can scratch floor.
- For best results, use only water with a mop. Avoid flooding the floor with too much water.
- For heavily soiled areas, use a neutral ph balanced floor cleaner
- Use caution when lifting boxes.
- Promptly remove any standing water to avoid slippage.
- Keep **ORCHID+** on the flat surface to keep it from warping

### Test Result

Test Item	Standard	Ecolay+ / Ecolock+
Level of use	EN 685	23 / 33
Dimensional stability	ISO 23999 / EN 434	<0.10% ( Norm: <0.25% )
Abrasion group	EN 660-2	Class T
Castor chair resistance	EN 425	No damage
Squareness & Straightness	ISO 24342	≤400 mm : ≤0.25 mm
		>400 mm : ≤0.35 mm
Residual indentation	ASTM F2055	≤0.01 in
	EN 433	≤0.1 mm
Impact sound insulation	ASTM F1914	<8%
	ISO 10140-3	6dB
Light fastness	ISO 10581	≥6
Slip resistance	EN 13893	DS
	DIN51130	R9
Resistance to chemicals	ISO 26987	No Defects
	ASTM F925	No Defects
Thermal resistance	ISO 8302	0.01 m²K/W
Curling after exposure to heat	ISO 23999	≤2 mm
Fire resistance	EN 13501	Bfl -s1
Flexibility	ISO 24344	Passed
	ASTM F137	Passed
Body Voltage	EN 1815	<2kV
Resistance against staining	ISO 26987	Passed
Underfloor heating suitability	EN 12524	Suitable
Formaldehyde group	EN 717-1	E1
Indoor air quality		Low VOC



EPT™ (Eco-Pro-Tec) Shield & EMT™ (Eco-Multi-Texture) Core



## Specifications

### With EPT™ shield & EMT™ core technologies

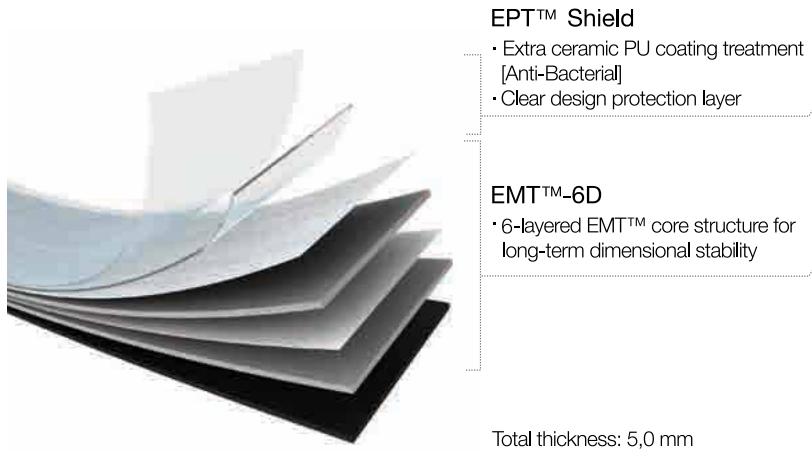
EPT™ shield & EMT™ core technologies are the foundation of **ECOLAY+** innovation, providing the most stable and eco-friendly products.

### Proven innovation of ECOLAY+ since 2003

Distinguished EMT™ core technology Multi-Layer Property ensures the unparalleled dimensional stability and extra sound absorption of **ECOLAY+**

### ECOLAY+ Non-skid backing

**ECOLAY+** can be supplied with non-skid backing type according to your request.



### Installation Guidelines

- Prior to installation, the subfloor must be heated for -14 days if heating is available, and if not, allow sufficient time to dry out completely.
- Room temperature must be maintained at 18°C or higher before and during installation.
- The flooring must be allowed to acclimate in the room to be installed for a minimum of 24 hours and be stacked flat on the floor to avoid bending the floor
- Prior to installation, please ensure that both color and lot# are the same.
- When installing **ECOLAY+**, be sure to keep dust, dirt or foreign particles away from the locking strip.

### Maintenance

- Regularly sweep floor to remove sand and grit that can scratch floor.
- For best results, use only water with a mop. Avoid flooding the floor with too much water.
- For heavily soiled areas, use a neutral ph balanced floor cleaner
- Use caution when lifting boxes.
- Promptly remove any standing water to avoid slippage.
- Keep **ECOLAY+** on the flat surface to keep it from warping

### Test Result

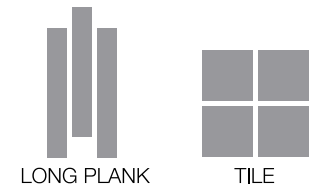
Test Item	Standard	Ecolay+ / Ecolock+
Level of use	EN 685	23 / 33 /42
Dimensional stability	ISO 23999 / EN 434	<0.10% ( Norm: <0.25% )
Abrasion group	EN 660-2	Class T
Castor chair resistance	EN 425	No damage
Squareness & Straightness	ISO 24342	≤400 mm : ≤0.25 mm
		>400 mm : ≤0.35 mm
Residual indentation	ASTM F2055	≤0.01 in
	EN 433	≤0.1 mm
Impact sound insulation	ASTM F1914	<8%
Light fastness	ISO 10140-3	9dB
Slip resistance	EN 13893	DS
	DIN51130	R10
Resistance to chemicals	ISO 26987	No Defects
	ASTM F925	No Defects
Thermal resistance	ISO 8302	0.01 m²K/W
Curling after exposure to heat	ISO 23999	≤2 mm
Fire resistance	EN 13501-1	Bfl -s1
Flexibility	ISO 24344	Passed
	ASTM F137	Passed
Body Voltage	EN 1815	<2kV
Resistance against staining	ISO 26987	Passed
Underfloor heating suitability	EN 12524	Suitable
Formaldehyde group	EN 717-1	E1
Indoor air quality		Low VOC



**ECOLAY+**  
EASIEST & STRONGEST GLUELESS LVT - LVP



EPT™ (Eco-Pro-Tec) Shield & EMT™ (Eco-Multi-Tecture) Core



www.sqrvinyltiles.com

0 542 669 5880



**AGK YER KAPLAMALARI PAZARLAMA LTD.**  
İSTANBUL: Göztepe Mah. Göksu Evleri Sit. Akkavak Cad. B145B 18 No'lu Villa 34815 Anadoluhisari Beykoz  
Tel:(216) 463 19 12 Fax:(216) 463 19 15  
İZMİR: Şair Eşref Bulvarı No:22/802 35210 Çankaya  
Tel:(232) 483 50 63 Fax:(232) 483 02 35  
ANKARA: Şehit Kurbanı Akboğa Sok. No:17/2 06610 Birlık  
Tel:(312) 495 72 57 Fax:(312) 495 72 45 GSM:(532) 326 94 87  
info@agk.com.tr www.agk.com.tr

**0800 ALO HALI • 0544 AGK HALI • 0544 ALO HALI**