





reddot award 2014
winner



ACCENTS + KNIT

ACCENTS FR-2104
KNIT FT-2206

Reinventing Spaces

 **LOOM**⁺

WOVEN DESIGN FLOORING



CONTENT

04 LOOM⁺ DIFFERENCE

10 DESIGN COLLECTION

24 INSTALLATION CONCEPT GUIDE

28 GLOBAL REFERENCES

38 TECHNICAL INFORMATION

LOOM+ DIFFERENCE

DESIGN and TECHNOLOGY
are woven together

LOOM+
DIFFERENCE

04/05

Infinite DESIGN spectrum

Only LOOM+ enables unique variation of creating your own floor by mixing and matching different patterns in two tile sizes.

Distinguished Ecotecture® Multi-layer Property

The first woven flooring with proven Ecotecture^{®E} Multi-layer Property that ensures the most stable and durable installation.



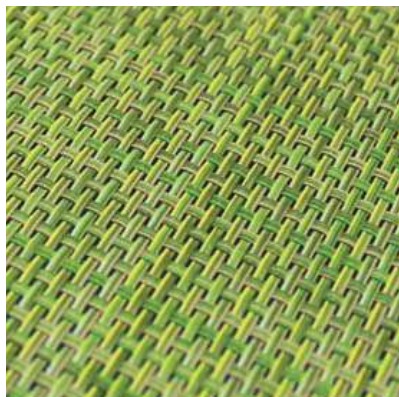
reddot award 2014
winner

The LOOM+ DESIGN PLAY WITH COLOR, SIZE,

and TEXTURE

Profound Color Composition

Realizing multiple tones of color - carefully selected by artists - we provide you with very unique colors that expresses LOOM+ in harmony with surrounding interiors.



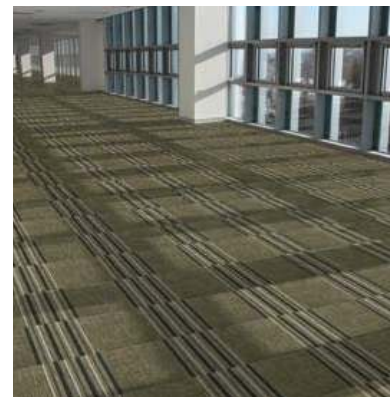
Infinite array of color and texture

Available in 47 colors covering diverse tones like neutral, cool, warm, light, and dark in four different yarn thicknesses, we give you seven unique design patterns.



Designed for mix & match

Creative and unique 'mix & match' only by LOOM+ is realized by introducing the same weaving system to seven design patterns.



Optimal 2 Size variation

With our unique 2 module sizes of 50cm x 50cm and 50cm x 100cm, the first introduced in woven flooring market, you can elevate the flat environments to inspiring interior spaces.



50x50cm
Standard size

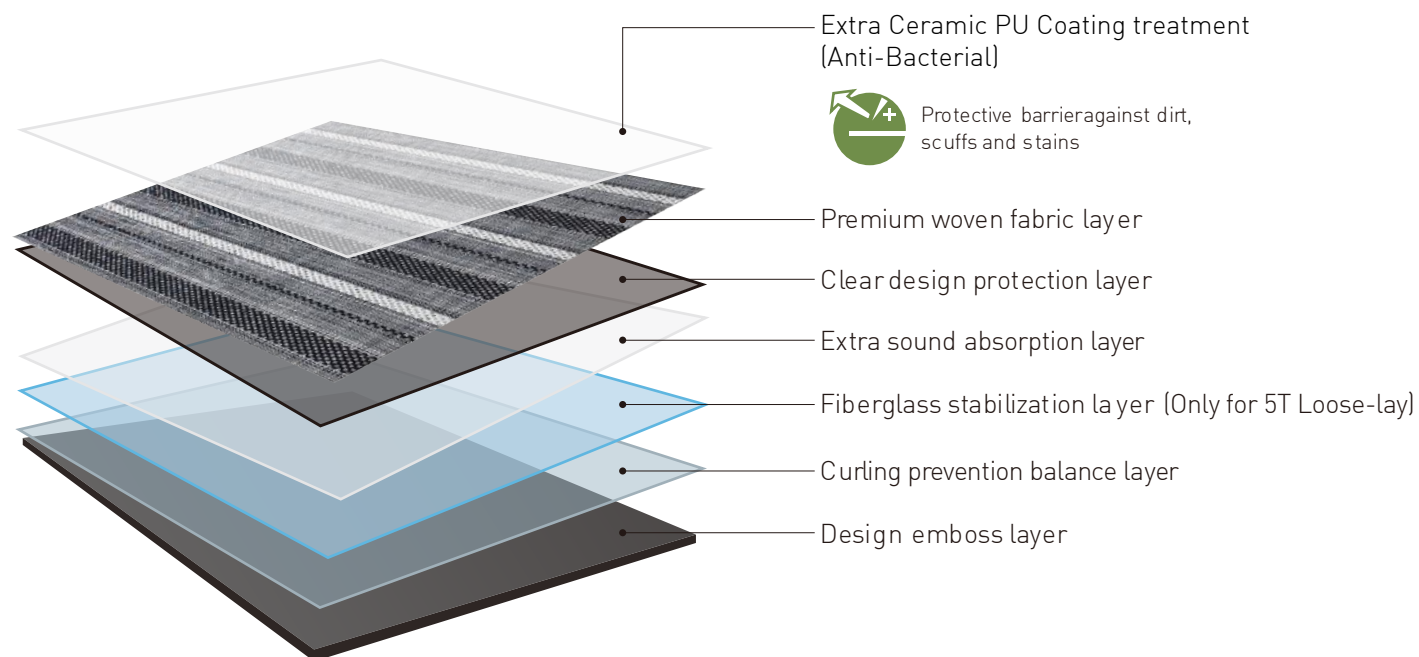


100x50cm
Double size

The LOOM + TECHNOLOGY Proven Innovation

Distinguished Ecotecture® Multi-layer Property

Ecotecture® Multi-layer Property featured with innovative functionality and safety, proven in more than 50 countries over 20 years



Safe

Certified non-toxic, phthalate-free, and fiberglass-free fabric



Clean

Xtreme CLEANguard PU Coating treatment applied to resist stain by not absorbing liquids and thus making spills quick and easy to clean



Tough

Approved for heavy commercial use



Quick

Quick and Easy ECO LAY® installation without glue



Easy

Minimal cleaning time and low maintenance



Silent & Soft

Soft surface absorbing sound



Consistent thickness

Consistent product thickness by patterns and size for mixing and matching different patterns



Fray-proof

Clean-cut finishing for preventing fraying



Non-Slip

Slip-resistance with woven fabric surface



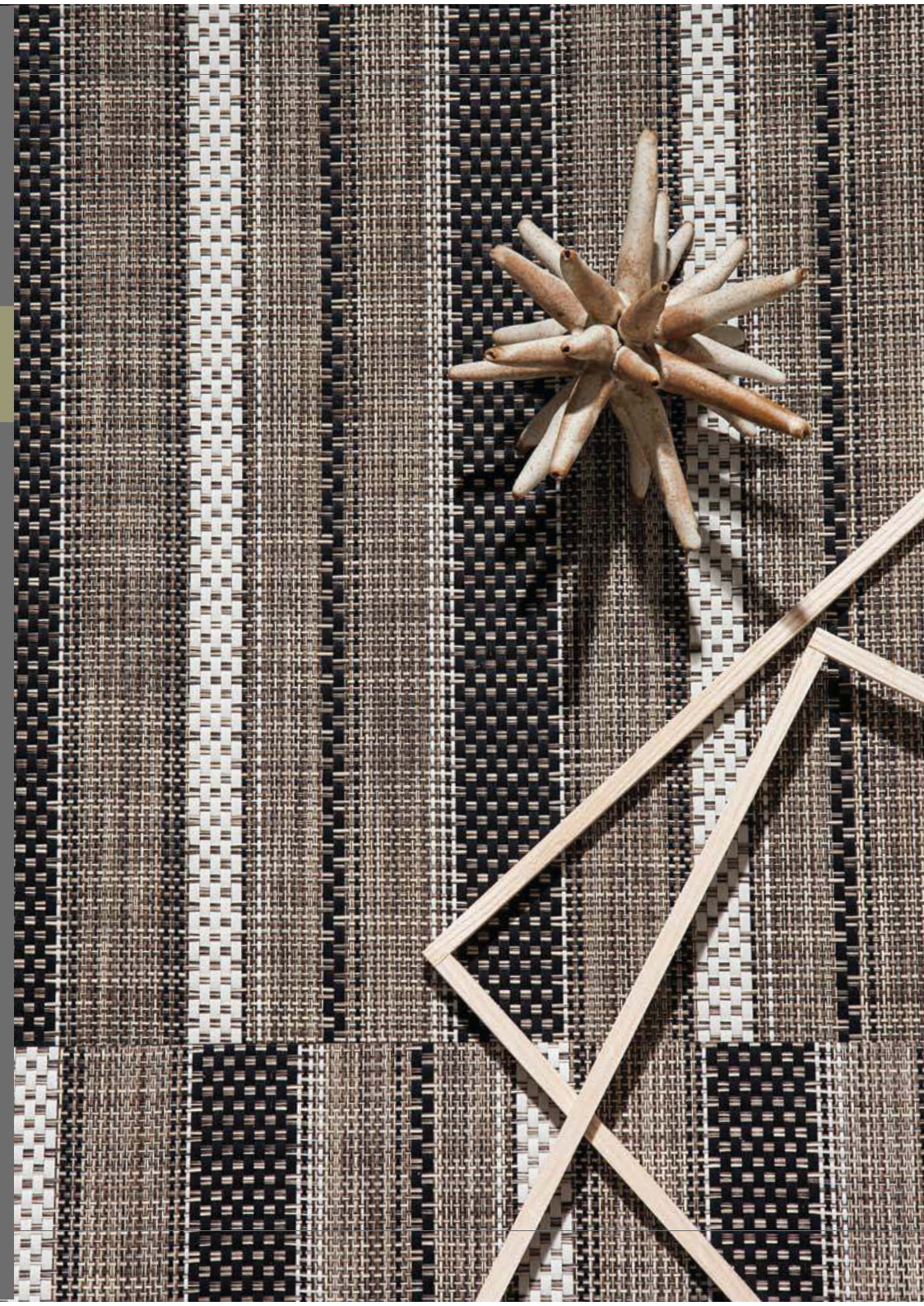
Colorfast

Colorfast properties retain gorgeous original colors over time



LOOM⁺
NEW COLLECTION

DESIGN COLLECTION
LOOM⁺ 1st EDITION
10/11



ACCENTS

Stylish & Decorative

Mix & match installation with knit and hand-stitch lines provides diverse floor designs. Sophisticated weaving structure coming in different thicknesses realizes never-seen before innovative floor textures.



FR-2102



FR-2103



FR-2104



FR-2105



FR-2106

KNIT

Cozy & Elegant

Having a structure most widely used in home interior materials, our designs harmonize well with various spaces. Although it has solid color tone in general, profound colors can be represented by mixing neutral colors like gray and brown.



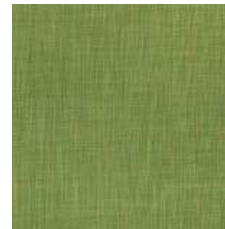
FT-2201



FT-2202



FT-2203



FT-2204



FT-2206



FT-2207



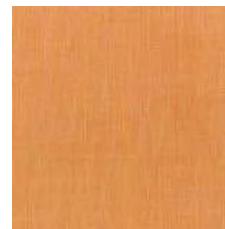
FT-2208



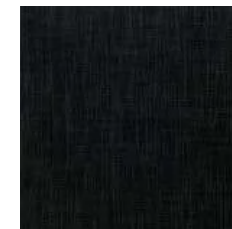
FT-2209



FT-2210



FT-2211



FT-2212



PIN-STRIPE

Modern & Retro-pop

Now with modern sensitivity, retro-pop mood and unique colors enable unique one-of-a-kind point design in commercial spaces



FR-2301



FR-2302



FR-2304



FR-2306



FR-2308

CRAFT

Natural & Comfortable

Our basic weaving structure pattern comfortably fits deluxe design for any space. Thanks to our reliable basic color adding capability, we are able to provide elegant feel to offices and banks.



FT-2001



FT-2003



FT-2004



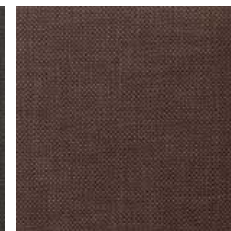
FT-2005



FT-2007



FT-2008



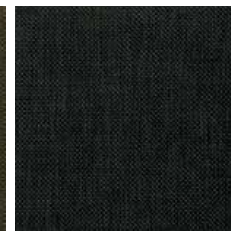
FT-2009



FT-2010



FT-2011



FT-2012



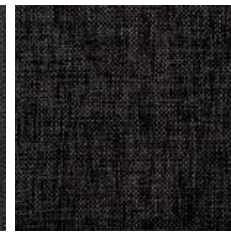
FT-2014



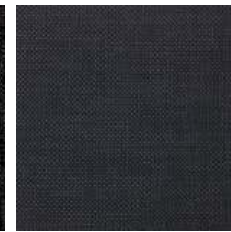
FT-2015



FT-2016



FT-2018



FT-2019



FT-2020



CORD

Cosmopolitan Style

It has a structure enabling modern design in various spaces. Brown colors covering from neutral and dark tones provide high-end ambiance to commercial spaces and offices.



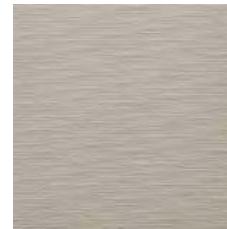
FT-1204



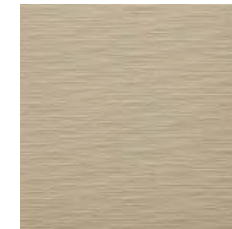
FT-1205



FT-1206



FT-1208



FT-1209

HAND-STITCH

Back to Nature

The structure tightly woven with lattice pattern, providing a feel similar to rattan, harmonizes well with various wood furniture. It can be widely used to design spaces of natural tone.

VINTAGE

Modern Rustic

The tough structure with unique woven texture and dark brown color tone will create surface interest. Unique striations of Vintage line accentuate the pattern for a chic upgrade to the common textile visual.

DESIGN
COLLEC-
TION

22/23



FT-1802



FT-1803



FT-1804

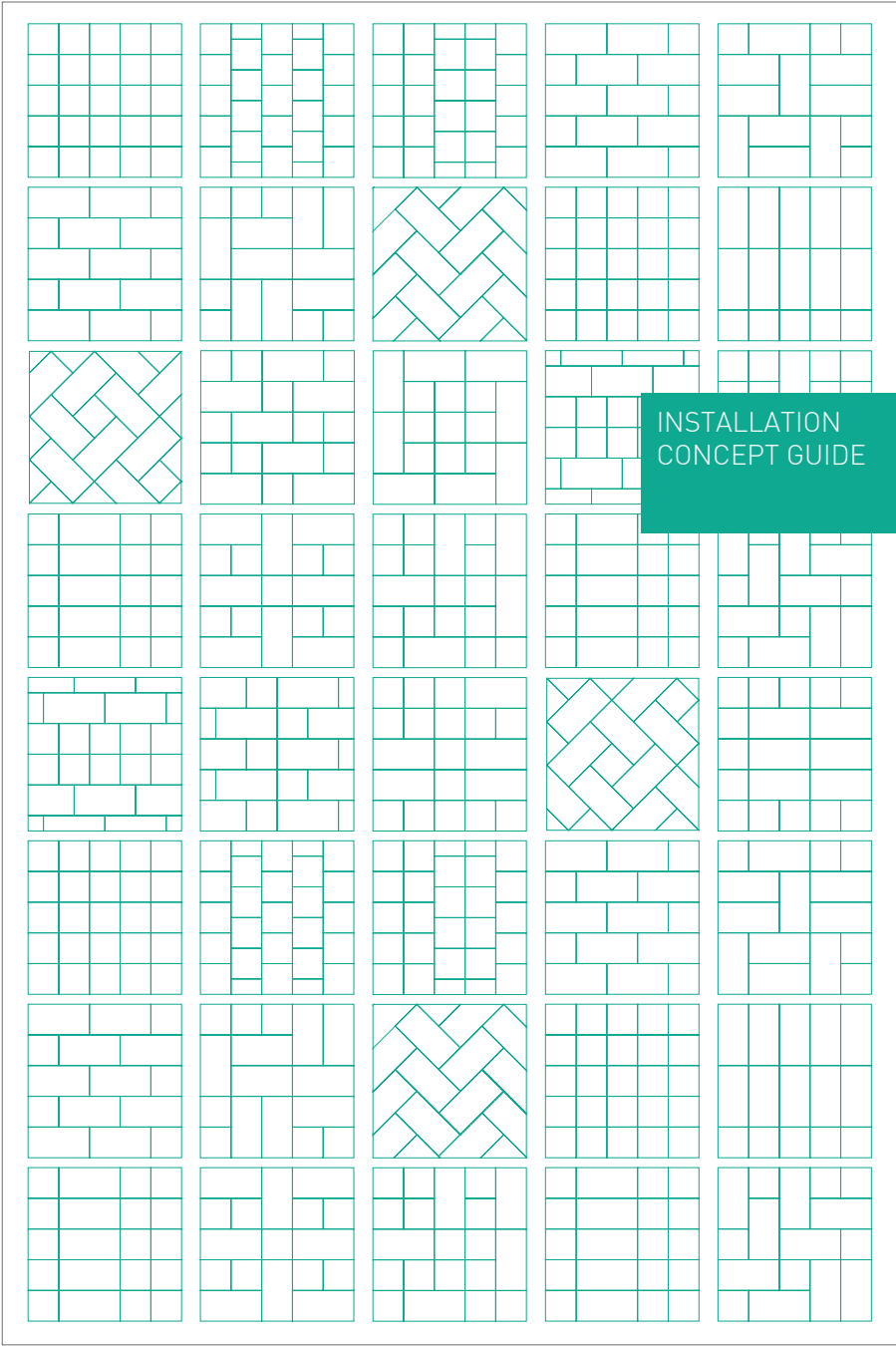


FT-1806



FT-1302

LOOM⁺ CONCEPT GUIDE



INSTALLATION
CONCEPT GUIDE

Reinvent Spaces with

LOOM⁺ PLAY!

Your flat environments will become more stylish with unlimited design options of LOOM⁺. Why don't you enjoy creating your own design by mixing & matching different patterns and colors in 2 size variations?

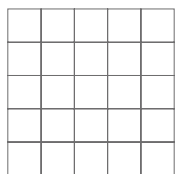


50x50cm

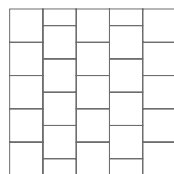


100x50cm

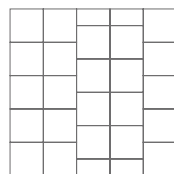
LOOM⁺ PLAY ONE



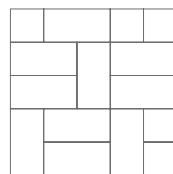
LOOM PLAY #1



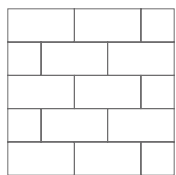
LOOM PLAY #2



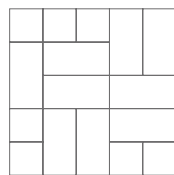
LOOM PLAY #3



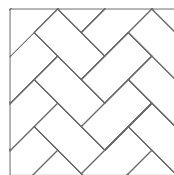
LOOM PLAY #4



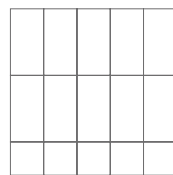
LOOM PLAY #5



LOOM PLAY #6

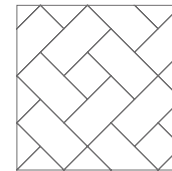


LOOM PLAY #7

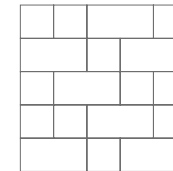


LOOM PLAY #8

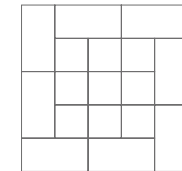
LOOM⁺ PLAY TWO



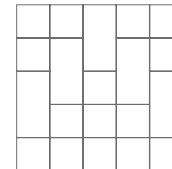
LOOM PLAY #9



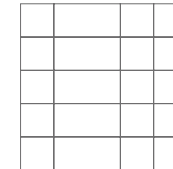
LOOM PLAY #10



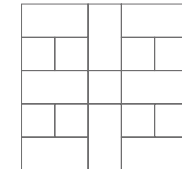
LOOM PLAY #11



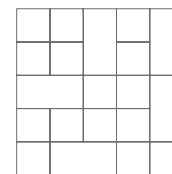
LOOM PLAY #12



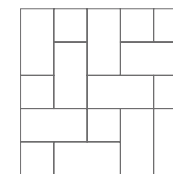
LOOM PLAY #13



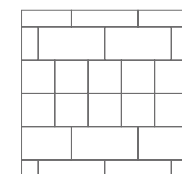
LOOM PLAY #14



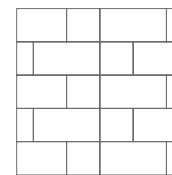
LOOM PLAY #15



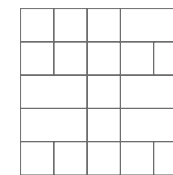
LOOM PLAY #16



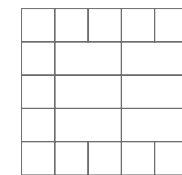
LOOM PLAY #17



LOOM PLAY #18



LOOM PLAY #19



LOOM PLAY #20



LOOM⁺
CREATE
YOUR OWN DESIGN

GLOBAL REFERENCES

28/29

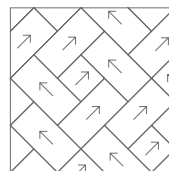
CRAFT+ CRAFT

FT-2001 FT-2003 FT-2005
FT-2014 FT-2018



HAND STITCH + HAND STITCH

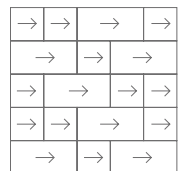
FT-1802 FT-1803
FT-1804 FT-1806



LOOM PLAY #9

KNIT+ KNIT

FT-2201 FT-2203 FT-2204
FT-2206 FT-2208

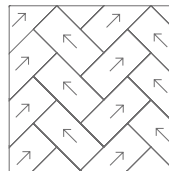


LOOM PLAY #10



CRAFT+ CRAFT

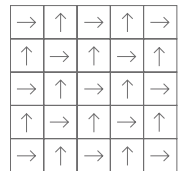
FT-2001 FT-2004
FT-2011 FT-2018



LOOM PLAY #7

CORD + CORD

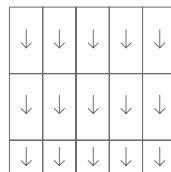
FT-1205 FT-1206
FT-1208



LOOM PLAY #1

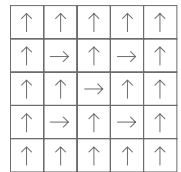


KNIT+ KNIT
FT-2208 FT-2212



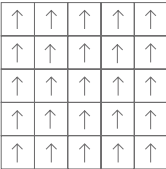
LOOM PLAY #8

PIN STRIPE + CRAFT
PIN STRIPE FR-2301
CRAFT FT-2014



LOOM PLAY #1

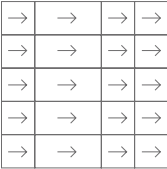
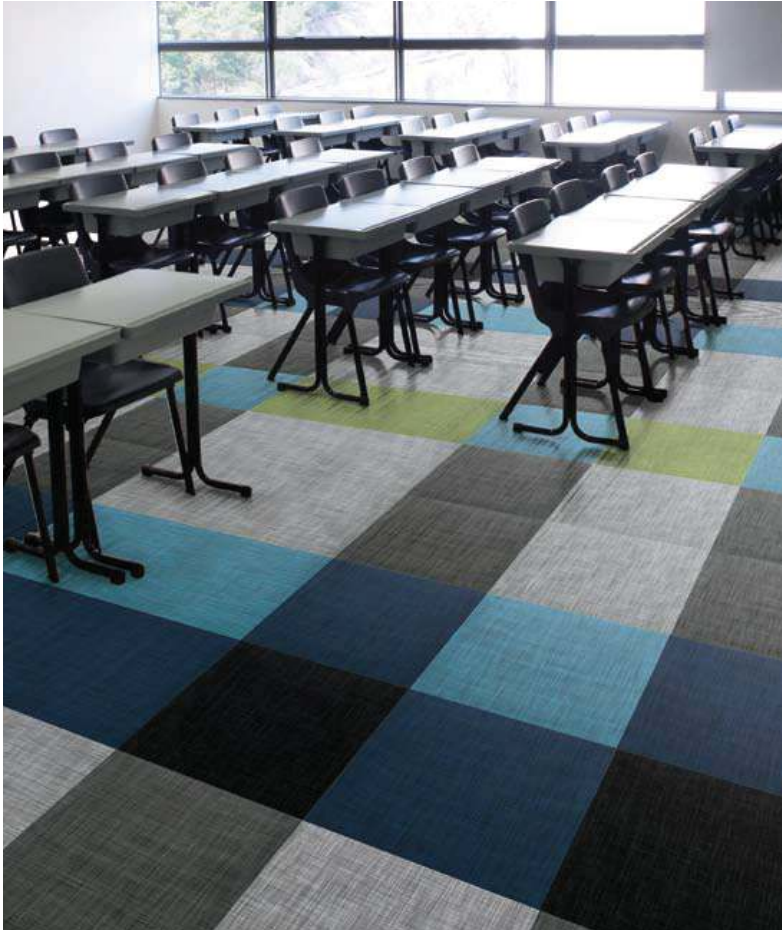
Hospitality & Health Care



LOOM PLAY #1

CRAFT
FT-2011

Education & Libraries



LOOM PLAY #13






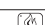





KNIT+ KNIT
FT-2202 FT-2203 FT-2204
FT-2208 FT-2209 FT-2212

TECHNICAL INFORMATION

1. Size & Packing

Size(mm)	Thickness(mm)	Pcs/Box	m ² /Box	Kg/m ²
500x500	3	16 pcs/box	4 m ²	5.0
	5	10 pcs/box	2.5 m ²	8.2
1000x500	3	8 pcs/box	4 m ²	5.0
	5	5 pcs/box	2.5 m ²	8.2

2. Test Result

Test Item		Standard	LOOM ⁺
Level of use		EN 685	33
Fraying		EN 1814	Frayproof
Thermal resistance		ISO 8302	0.02m ² K/W
Castor chair resistance		EN 985	No damage
Dimensional stability		ISO 23999 / EN 434 EN 986	≤ 0.10% [Norm: ≤ 0.25%] Passed
Fire resistance		EN 13501	Bfl -s1
Formaldehyde group		EN 717-1	E1
Indoor air quality			Low VOC
Underfloor heating		EN 12524	Suitable
Light fastness		ISO 105-B02	≥ 6
Slip resistance		DIN 51130 EN 13893	R10 DS
Flexibility		ISO 24344	Passed
Impact sound insulation		ISO 10140-3	9dB
Body Voltage		EN 1815	< 2kV
Squareness & Straightness		ISO 24342 ASTM F2055	No deviation ≤ 0.01 in
Residual indentation		EN 433 ASTM F1914	≤ 0.1mm < 8%
Resistance to chemicals		ISO 26987 ASTM F925	No Defects No Defects

3. Caution

Condition in at least 18°C or the normal temperature of the room where the product is to be laid, for at least 48 hours before installing. Cartons must be stacked less than 5 high and tiles removed 30 minutes before use. The site conditions must be maintained during installation and for at least 48 hours after completion. NOX Corporation will not accept claims where these instructions have not been followed.

4. Certificate



Visit www.loomplus.com for the detailed installation / maintenance guides and technical information.



İSTANBUL:

Göztepe Mah. Göksu Evleri Sit.
Akkavak Cad. B145B 18 No'lu Villa
34815 Anadoluhisari Beykoz
Tel:(216) 463 19 12
Fax:(216) 463 19 15

İZMİR:

Şair Eşref Bulvarı No:22/802
35210 Çankaya
Tel:(232) 483 50 63
Fax:(232) 483 02 35

ANKARA:

Şehit Kurbanı Akboğa Sok.
No:1 7/2 0661 0 Birlik
Tel:(312) 495 72 57
Fax:(312) 495 72 45
GSM:(532) 326 94 87

info@agk.com.tr

www.sqrvinyltiles.com

0 542 669 58 80

0 544 ALO HALI

